

# Duplex Unit Type 3800C

(Code: G571)

## For Machine Code: G060 / G082 INSTALLATION GUIDE

### ⚠ Caution

- Before installing options, the machine should be turned off and unplugged for at least thirty minutes. Components inside the machine become very hot, and can cause a burn injury if touched.
- When lifting the machine, use the grips on both sides. The machine could break or cause an injury if dropped.
- It is dangerous to handle the plug with wet hands. Doing this may result in receiving an electric shock.
- Before moving the machine, unplug the power cord from the outlet. If the cord is unplugged abruptly, it could become damaged. Damaged plugs or cords can cause an electrical or fire hazard.
- The inside of the machine becomes very hot. Do not touch the parts with a label indicating a "hot surface". Touching a "hot surface" could result in a burn.
- Do not let go of the Duplex Reversal Unit until it is fastened in place. It could drop and cause an injury.

### ❗ Important

- ☐ Check the printer nameplate to confirm the model code.
- ☐ If you want to use the optional Paper Feed Unit at the same time, install the optional Paper Feed Unit first, and then install the Duplex Unit.

## 1 Installing the Duplex Reversal Unit Stand

### 1 Check the contents of the box.

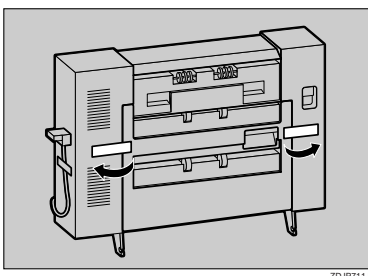
Description	Q'ty
Stand	1
Paper Guide	1
Short Screw	1
Long Screws	4
Duplex Reversal Unit	1
Duplex Feed Unit	1
Installation Guide (This sheet)	1

### 2 Remove the adhesive tape and packing materials.

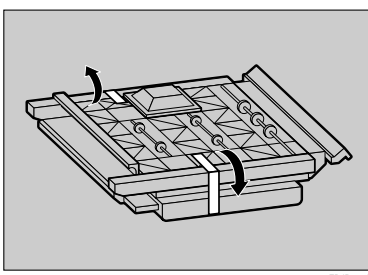
#### ❗ Important

- ☐ Do not remove the adhesive tape which hold the auxiliary bar at this point. Remove it in step 3 on 2 Installing the Duplex Reversal Unit.
- ☐ Remove the adhesive tape which hold the cable of the Duplex Reversal Unit at this point. Remove it in step 7 on 2 Installing the Duplex Reversal Unit.

#### Duplex Reversal Unit

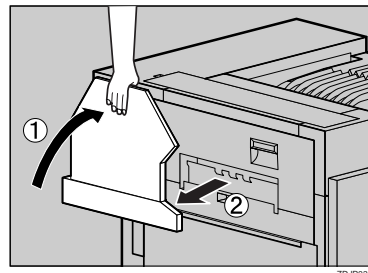


#### Duplex Feed Unit



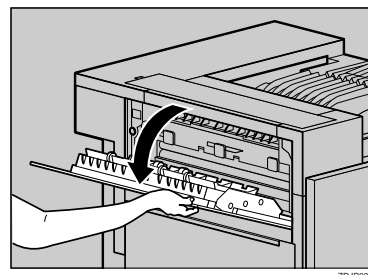
### 3 Turn off the power switch and unplug the power cable from the wall outlet.

### 4 Lift the External Tray in the direction of the arrow (1) and remove (2).

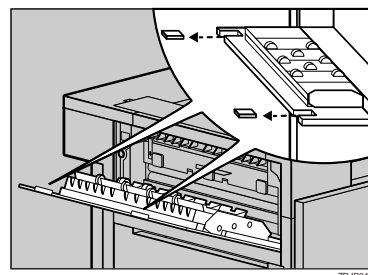


### 5 Remove the two small covers on the upper left cover of the printer.

#### 1 Open the upper left cover.



#### 2 Pinch the two small covers and pull in the direction of the arrow to remove them.



#### 3 Close the upper left cover.

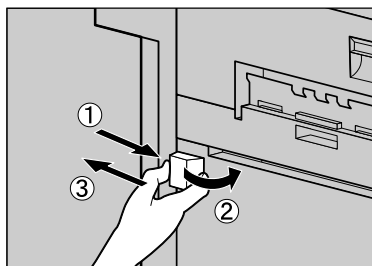
#### 📌 Note

- ☐ You will not use the removed two covers.



6

Remove the protective cover on the left side of the printer. Hold the protective cover by both sides, and while pushing the left side of the cover (①), open it in the direction of the arrow (②), and then remove (③).



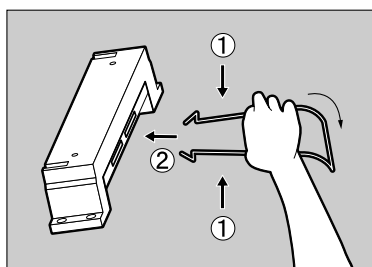
ZDJP041J

#### Note

- ❑ You will not use the removed protective cover.

7

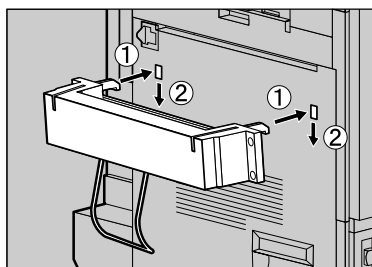
Attach the paper guide to the stand. Hold the paper guide so that its right side bends down as shown in the illustration, and while holding it lightly (①), insert it into the holes of the stand (②).



ZDJP042J

8

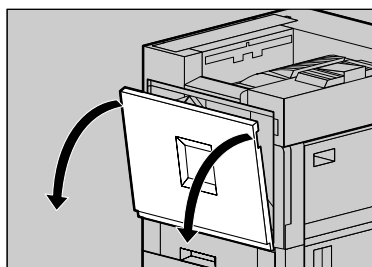
Insert the claws of the stand into the holes on the left side of the printer (①), and push down (②).



ZDJP043J

9

Open the front cover slowly by pulling the two points on the left and right.

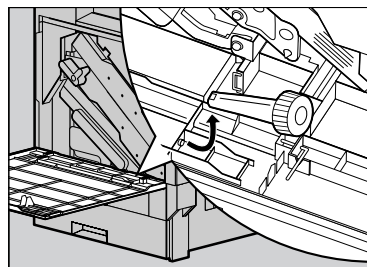


ZDJP007J

10

Take out the green screwdriver and close the front cover.

Use this screwdriver for all attachment and detachment of screws.



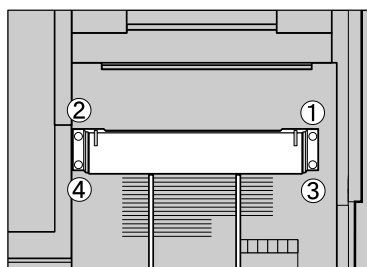
ZDJP013J

#### Note

- ❑ After using the screwdriver, return it to its original position on the inside of the front cover.

11

Tighten four long screws to fasten the Duplex Reversal Unit Stand using provided screwdriver. Fasten in the order of ①⇒②⇒③⇒④ as shown in the illustration.



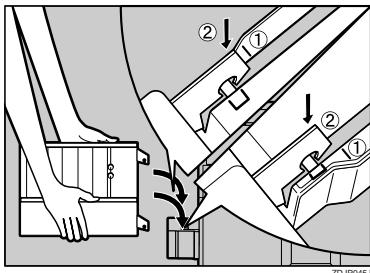
ZDJP044J

This completes the installation of the stand. Next, install the Duplex Reversal Unit.



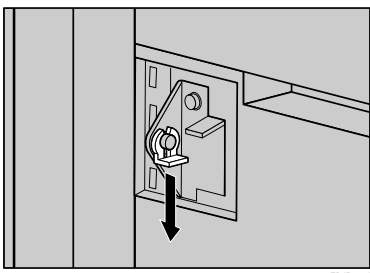
## 2 Installing the Duplex Reversal Unit

- 1 Holding the Duplex Reversal Unit in a level position with both hands, insert the hooks into the groove of the stand. At this point, adjust the tip of the hooks to the line on the stand (①) and insert slowly (②). Do not let go of the Duplex Reversal Unit even after insertion.



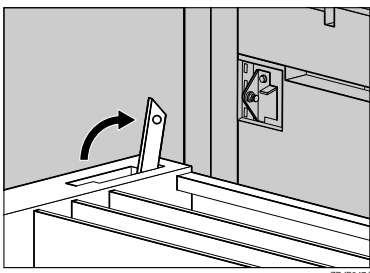
The hooks of the Duplex Reversal Unit grasp the bar inside the groove of the stand.

- 2 Supporting the Duplex Reversal Unit, remove the stopper of the mounting bracket on the printer.

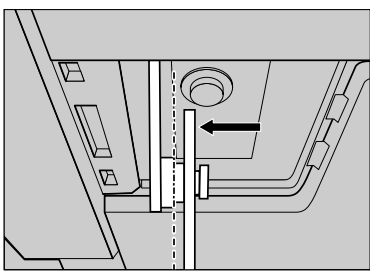


This stopper will be used in a later step, so be careful not to lose it.

- 3 Supporting the Duplex Reversal Unit, remove the adhesive tape and hold the auxiliary bar in front of the hook on the left side, and then stand it up.

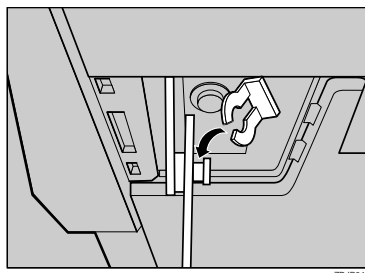


- 4 Hook the hole of the auxiliary bar on the mounting bracket of the printer.



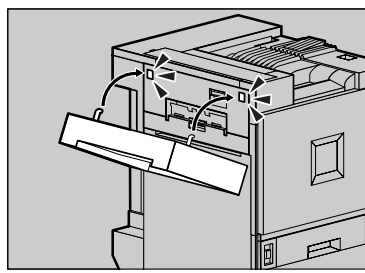
In step 5, move the auxiliary bar to the position shown with a perforated line in the illustration.

- 5 Hang the auxiliary bar on the deep left end as shown in the illustration, and then install the stopper that was removed in step 2.

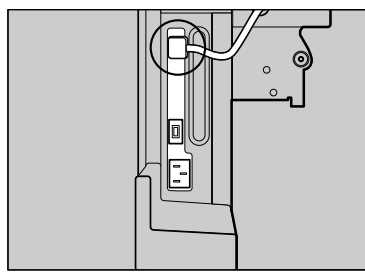


Make sure the auxiliary bar and stopper are installed in the positions shown in the illustration.

- 6 Raise the Duplex Reversal Unit slowly, and then adhere it to the printer.



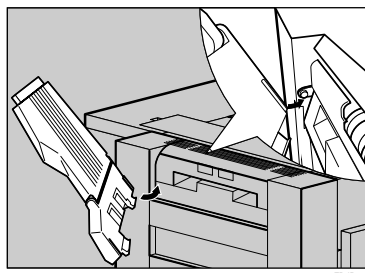
- 7 Remove the adhesive tape which hold the cable, and then connect the cable of the Duplex Reversal Unit to the upper connector on the back of the printer.



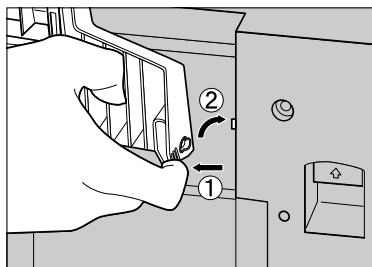
This completes installation of the Duplex Reversal Unit. Install the Duplex Feed Unit after installing the External tray.

- 8 Install the External Tray.

- 1 Stand the External Tray and insert it from the left side with both hands.

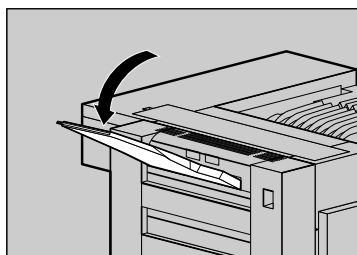


- 2** Pushing the right edge of the External tray lightly with your finger (①), insert it (②).



ZDJP053J

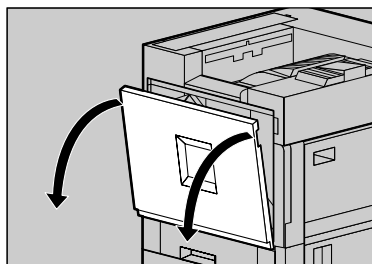
- 3** Lower the External Tray toward you.



ZDJP054J

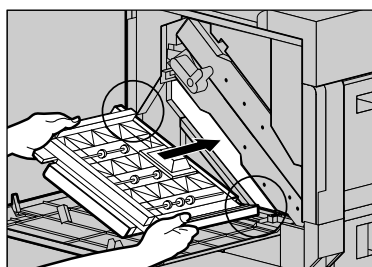
## 3 Installing the Duplex Feed Unit

- 1** Open the front cover slowly by pulling the two points on the left and right.



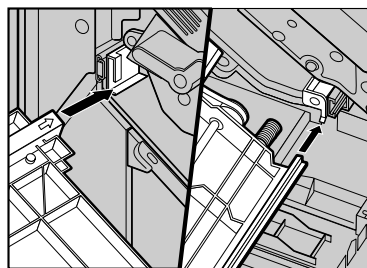
ZDJH007J

- 2** Holding the Duplex Feed Unit with both hands, place it on the vertical rail and insert slowly until it stops.



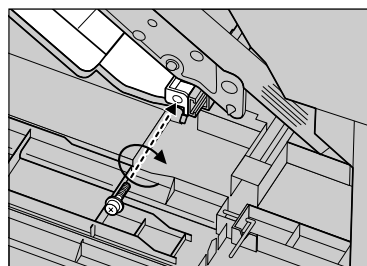
ZDJP056J

The vertical rail is in the position as shown in the illustration.



ZDJP133J

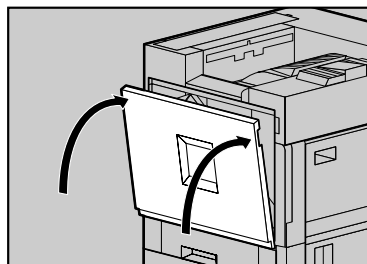
- 3** Fasten the Duplex Feed Unit with one short screw using provided screwdriver.



ZDJP057J

This completes installation of the Duplex Feed Unit.

- 4** Close the front cover slowly by pressing the two points on the left and right.

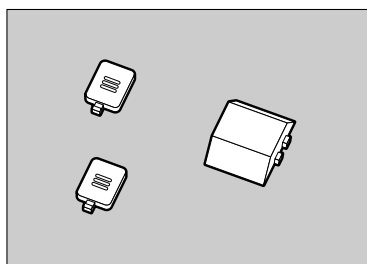


ZDJH041J

### Note

- ☐ After finishing all installation for printing, you can check whether Duplex Unit is installed properly. Print the Configuration Page from the "List/Test Print" menu. If it is installed properly, you will see "Duplex Unit" under the "Options" list. (G060)
- ☐ After finishing all installation for printing, you can check whether Duplex Unit is installed properly. Print the Configuration Page from the "Print Menu" menu. If it is installed properly, you will see "Duplex Unit: Installed" under the "Installed Options" list. (G082)
- ☐ If the Duplex Unit is not installed properly, reinstall from step 1. If you cannot install it properly even after reinstallation, contact your sales or service representative.

- 5** Check for spare parts. You will not use these spare parts.



ZDJP058J